



**D** DIDACE  
INTERNATIONAL LTD

# Didace International Limited

Company Profile -2025





# Table of Contents

---



1. About Didace International Limited
2. Vision & Mission
3. Our Core Business
4. Future Expansion
5. Product Portfolio
6. Quality and Compliance
7. Leadership and Culture



01

# About Us

## Who We Are

Founded in July 2025, Didace International Ltd is a Tanzanian company dedicated to bringing the world's finest whisky and wine into the East African market. We focus on importing and distributing & production premium alcoholic beverages that reflect quality, tradition, and taste.

As we build a solid foundation in the beverage import sector, we also envision a future expansion into the real estate industry, providing modern, accessible, and well-designed living and commercial spaces.

Our mission is rooted in quality, trust, and forward thinking — bridging global excellence with local demand.





02

## Vision & Mission

### Vision

To be a leading importer and trusted provider of luxury lifestyle products and services in East Africa, with a future focus on real estate development.

### Mission

To enrich experiences by importing and distributing exceptional whisky and wine brands, while building a strong platform for real estate innovation and investment.



03

## Our Core Business

### Premium Alcohol Production Importation & Distribution

Didace International Ltd specializes in the importation of top-tier whisky and wine brands from around the world. With a focus on quality and authenticity, we aim to elevate the consumer experience across Tanzania and the East African region.

We partner with globally respected producers and ensure all products are:

- Properly certified and compliant with Tanzanian regulations
- Stored and transported under optimal conditions
- Packaged for both retail and hospitality distribution



05

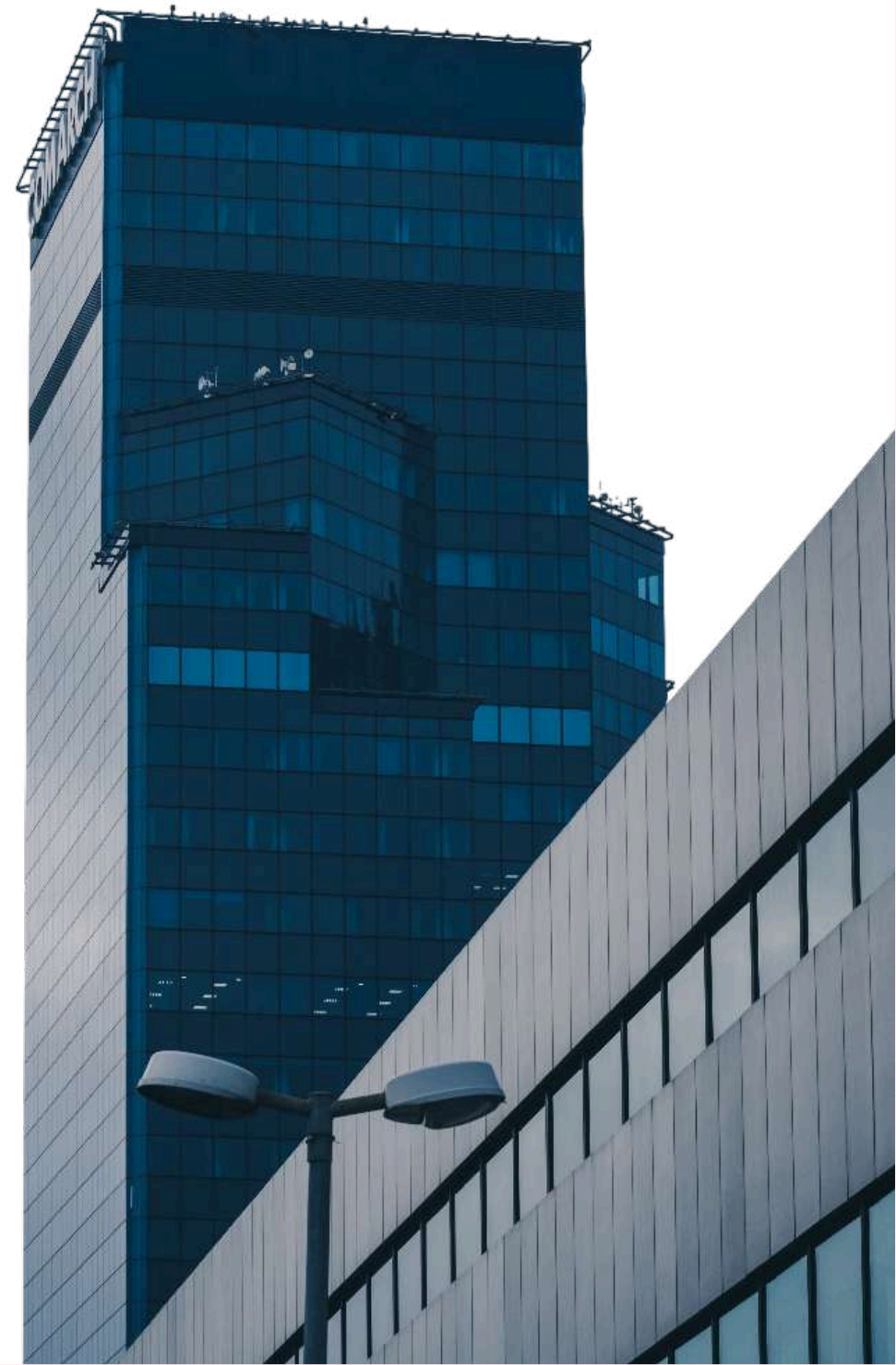
## Future Expansion

### Real Estate Investment

As part of our long-term growth strategy, Didace International Ltd plans to diversify into the real estate sector, offering:

- Affordable and modern housing solutions
- Commercial property development
- Real estate investment opportunities

This expansion will strengthen our position as a versatile and visionary business partner in Tanzania and beyond.



06

## Product Portfolio

Our curated collection includes:

- Premium Scotch and Irish Whiskies
- Luxury Red, White, and Rosé Wines
- Special Reserve and Limited Edition Bottles

We cater to:

- Liquor stores & supermarkets
- Restaurants, bars, and lounges
- Private buyers and collectors

We currently operate in:

- Tanzania (All Regions)
- Expanding toward Kenya, Rwanda, and Uganda

Our audience includes:

- Urban consumers
- Hospitality businesses
- Retail and wholesale partners

We aspire to become a regional leader in lifestyle imports and developments.







Conventual  
DOC ALENTEJO-PORTALEGRE  
PORTUGAL  
2017  
TRINCADIEIRA - ARAGOEZ  
ALICANTE BOUSCHET  
PRODUCE OF PORTALEGRE



LEGACY  
- GIN -

SINCE  
1887

EST. 1887

**LEGACY  
- GIN -**

CRAFTED FOR GENERATIONS

*Fine Generations of Excellence*

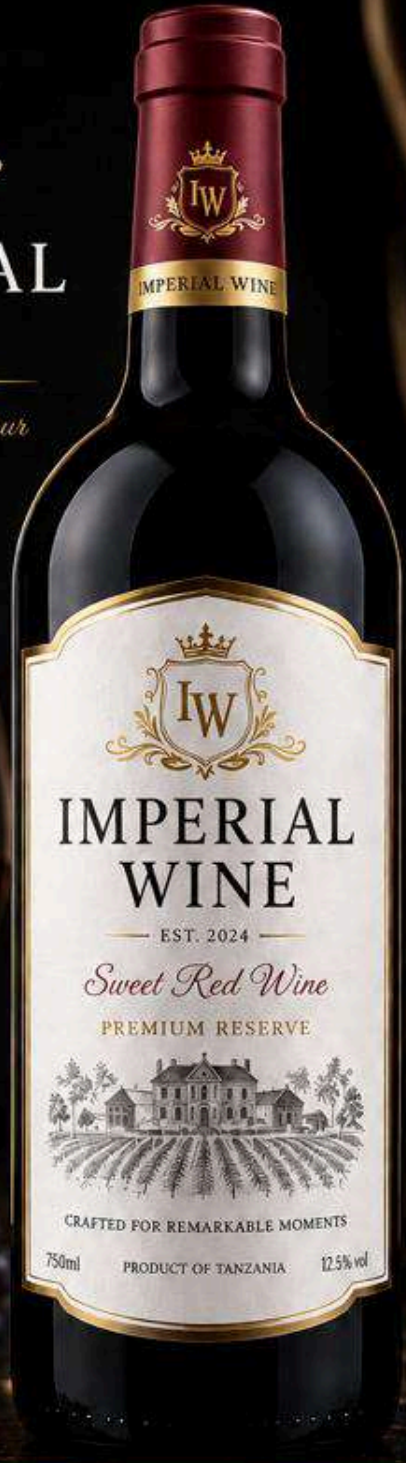
PREMIUM GIN  
DISTILLED & BOTTLED  
IN SCOTLAND

700ml | 40% vol



# IMPERIAL WINE

*Elegance in Every Pour*



IMPERIAL  
WINE

EST. 2024

*Sweet Red Wine*

PREMIUM RESERVE

CRAFTED FOR REMARKABLE MOMENTS

750ml PRODUCT OF TANZANIA 12.5% vol



# IMPERIAL WINE

*Elegance in Every Pour*



IMPERIAL  
WINE

*Sweet Red Wine*

A smooth and delightful wine  
crafted from the finest grapes,  
blended to perfection for a rich,  
sweet and unforgettable taste.  
Best enjoyed with good food  
and great company.

Serve Chilled    Finest Grapes    Expertly Crafted

PRODUCT OF TANZANIA

Produced & Bottled by  
Imperial Wine Winery Ltd.  
P.O. Box 1234, Dodoma, Tanzania  
info@imperialwine.co.tz  
www.imperialwine.co.tz

12.5% vol    750ml

6 123456 789012

NOT FOR SALE TO PERSONS UNDER  
THE AGE OF 18.  
DRINK RESPONSIBLY.

PREMIUM EXPERTLY PROUDLY



PREMIUM PACKAGING

IMPERIAL  
WINE



07

## Quality & Compliance

As part of our long-term growth strategy, Didace International Ltd plans to diversify into the real estate sector, offering:

- Affordable and modern housing solutions
- Commercial property development
- Real estate investment opportunities

This expansion will strengthen our position as a versatile and visionary business partner in Tanzania and beyond.

# Didace

08

## Leadership & Culture

Didace International Ltd is led by a team of visionary entrepreneurs and strategic partners who believe in growth through excellence, brand integrity, and market innovation.

Our leadership style is:

Transparent



Trategic



Growth- Oriented





Didace International Ltd  
Riverside, Ubungo - Dar es salaam  
+255 (0) 766 473 355  
[salviusdbifandim@gmail.com](mailto:salviusdbifandim@gmail.com)